

#EISG2026



EUROPEAN ISLET STUDY GROUP CONFERENCE 2026

BARCELONA
JUNE 17-19, 2026



Local Chairs:

Dr. Meritxell Rovira

Group Leader, Bellvitge Biomedical Research Institute, L'Hospitalet de Llobregat
Associate professor, Faculty of Medicine, Universitat de Barcelona

Dr. Lorenzo Pasquali

Professor and Group Leader,
Universitat Pompeu Fabra, Barcelona

Venue:

Barcelona Biomedical Research Park (PRBB)
Carrer del Doctor Aiguader, 88, Barcelona

Organized by:



Satellite Symposium + Lunch
European Islet Study Group, 2026

Advancing Metabolic Research: Mechanisms of Action, Models, and Clinical Challenges

Join us on

Thursday 18 June - 14:30-15:30

Room: Marie Curie



Jörgen Dahlström

CEO, Mercodia

Introducing the Mercodia Metabolic Research Award



Amalia Gastaldelli

Director of Research, Head of the Cardiometabolic Risk Group,
Institute of Clinical Physiology, CNR, Pisa, Italy

The Metabolic Action of Glucagon



Diego Balboa

University of Helsinki

Accelerating Diabetes Disease Modeling: Direct
Genome Editing in Stem Cell-Derived Islets



Ditte Hermann

Department of Clinical Biochemistry, Copenhagen University Hospital -
Bispebjerg

Large-scale Immunoassays in a Clinical
Laboratory



Mercodia Metabolic Research Award

Scan the QR code or visit
mercodia.com/mercodia-metabolic-research-award





Wednesday, June 17

11:00 - 11:50 **REGISTRATION**

11:50 - 12:00 **Opening & Welcome Remarks**

Lorenzo Pasquali, Universitat Pompeu Fabra, Barcelona, Spain
Meritxell Rovira, Bellvitge Biomedical Research Institute,
L'Hospitalet de Llobregat, Spain

12:00 - 14:00 **Session 1**

GENOMICS AND EPIGENOMICS OF ISLET CELLS

Chairs:

Charlotte Ling, Lund University Diabetes Centre, Sweden
Lorenzo Pasquali, Universitat Pompeu Fabra, Barcelona, Spain

12:00 - 12:30 **Charting the 6-base genome in pancreatic beta cells**

Fanny Mollandín, Centre for Genomic Regulation, CIBERDEM,
Barcelona, Spain

12:30 - 13:00 **Genomics of type 1 diabetes risk in pancreatic beta cells**

Kyle Gaulton, Institute for Genomic Medicine, UC San Diego,
California, USA

13:00 - 13:30 **Regulation of insulin secretion by islet microexons**

Manuel Irimia, Centre for Genomic Regulation. Universitat
Pompeu Fabra, Barcelona, Spain

13:30 - 13:45 **PO 21 - A targeted epi-drug screen identifies HDAC6
inhibition as an enhancer of beta cell function
and immune evasion**

Steven Millership, Imperial College London, UK

13:45 - 14:00 **PO 34 - Inflammation-induced chromatin remodeling
and transcription factor networks reveal β cell regulatory
vulnerabilities in T1D**

Georgina Fuentes, Universitat Pompeu Fabra, Barcelona, Spain

14:00 - 15:00 **LUNCH BREAK**



Wednesday, June 17

15:00 - 17:00 **Session 2**

METABOLISM IN ISLET CELLS

Chairs:

Charna Dibner, University of Geneva, Switzerland

Rebeca Fernández, Hospital Clínic Barcelona - IDIBAPS, Spain

15:00 - 15:30 **High and low insulin production states of primary and stem cell-derived human beta cells**

James Johnson, Cellular and Physiological Sciences,
The University of British Columbia, Vancouver, Canada

15:30 - 16:00 **Beta-cell adaptive mechanisms in response to calorie restriction: a matter of when and how**

Rafael Arrojo e Drigo, Vanderbilt University, Nashville, Tennessee,
USA

16:00 - 16:30 **The metabolic determinants of basal insulin secretion**
Marc Liesa, Institute of Molecular Biology of Barcelona, Spain

16:30 - 16:45 **PO 133 - Intrinsic metabolism and islet architecture dictate beta cell-selective interferon responses to endogenous dsRNA**

Agnes klochender, The Hebrew University of Jerusalem, Israel

16:45 - 17:00 **PO 109 - New aspects of beta cell physiology revealed by mTORC1 signaling**

Aharon Helman, The Hebrew University of Jerusalem, Israel

17:00 - 17:20 **Coffee Break**

17:20 - 18:20 **Poster Session 1**

18:20 - 19:20 **Poster Session 2**





Thursday, June 18

08:30 - 09:15 **Keynote Lecture**

Chair: Timo Otonoski, University of Helsinki, Finland

A 30-year journey in the transcriptional regulation of Islet cell formation

G rard Gradwohl, Institut de Genetique et Biologie Moleculaire et Cellulaire, Illkirch, France

09:15 - 11:30 **Session 3**

THE ISLET CELL IN TYPE-2 DIABETES AND TREATMENT STRATEGIES

Chairs:

Mostafa Bakhti, Helmholtz Munich, Germany

Jorge Ferrer, Centre for Genomic Regulation, CIBERDEM, Barcelona, Spain

09:15 - 09:45 **Context-specific contributions of human islet regulatory variants and altered cell states to type 2 diabetes**

Michael Stitzel, The Jackson Laboratory for Genomic Medicine Farmington, Connecticut, USA

09:45 - 10:15 **Regulation of β -Cell insulin secretion: from MicroRNAs to mitochondria**

Aida Mart nez-S nchez, Imperial College London, Department of Metabolism, Digestion and Reproduction, London, UK

10:15 - 10:45 **PO 97 - Anti-inceptor antibodies potentiate β -cell insulin signalling, function and survival in healthy and type 2 diabetes mice**

Jin Feng, Helmholtz Munich, Germany

10:45 - 11:00 **PO 41 - Deciphering the regulatory role of a long non-coding RNA in pancreatic endocrine development and diabetes**

Sandra Heller, Ulm University, Germany

11:00 - 11:15 **PO 8 - Cell-specific DNA methylation in human α - and β -cells regulates gene expression and impacts type 2 diabetes**

Jones Ofori, Lund University, Sweden



Thursday, June 18

11:15 - 11:30 PO 101 - Delineating cellular niches and β -cell maturation during development and regeneration in zebrafish
Olov Anderson, Uppsala University, Sweden

11:30 - 12:05 **COFFEE BREAK**

12:05 - 14:10 **Session 4**

THE ISLET CELL IN TYPE-1 DIABETES AND TREATMENT STRATEGIES

Chairs:

Laura Marroquí, Miguel Hernández University of Elche, Spain
Teresa Rodríguez-Calvo, Helmholtz Munich, Germany

12:05 - 12:35 Targeting the early and late signal transduction of interferons to protect beta cells in type 1 diabetes
Decio L Eizirik, Université Libre de Bruxelles, Center for Diabetes Research Brussels, Belgium

12:35 - 13:05 Controlling metabolic regulators enhances stem cell derived human beta cell function
Matthias Hebrok, Institute for Diabetes and Organoid Technology, Center for Organoid Systems, Technical University of Munich, Germany

13:05 - 13:40 Single islet analysis and the unfolding of the diabetic battlefield
Nadav Sharon, Technion - Israel Institute of Technology

13:40 - 13:55 PO 75 - Selective TYK2 vs JAK1/2 inhibition differentially tunes the inflammatory transcriptome and protects human β -cells from CTL mediated killing
Sayro Jawurek, InSphero, Zürich, Switzerland

13:55 - 14:10 PO 73 - GLP1-E2 Therapy delays autoimmune diabetes in late-stage prediabetic NOD mice and potentiates low-dose. Anti-CD3 therapy for enhanced disease protection
Laure Degroote, KU Leuven, Belgium

14:10 - 15:30 **LUNCH BREAK**



Thursday, June 18

14:30 - 15:30 **Satellite Symposium**

Advancing Metabolic Research: Mechanisms of Action, Models, and Clinical Challenges

Room: Marie Curie - Groundfloor

Organized by  **Mercodia**

15:30 - 17:30 **Session 5**

MODELLING HUMAN ISLETS ON A PLATE

Chairs:

Heiko Lickert, Helmholtz Munich, Institute of Diabetes & Regeneration Research, Germany
Diego Balboa, University of Helsinki, Finland

15:30 - 16:00 **Human islet omics from gene discovery to therapy**
Miriam Cnop, Université Libre de Bruxelles, Center for Diabetes Research Brussels, Belgium

16:00 - 16:30 **Pancreas organoid models of Diabetes**
Anne Grapin-Botton, Max Planck Institute of Molecular Cell Biology and Genetics, Dresden, Germany

16:30 - 17:00 **Modelling pancreatic fate and disease: dissecting regulatory mechanisms in iPSC derived organoids**
Rocío Sancho, Centre for Gene Therapy & Regenerative Medicine, King's College London, UK

17:00 - 17:15 **PO 48 - β -Cell obligation in a-cell glucagon response to low glucose**
Eva Bru Tari, University of Geneva, Switzerland

17:15 - 17:30 **PO 13 - Dorsal or ventral islets: What sets endocrine fate?**
Idem Akerman, University of Birmingham, UK

17:30 - 18:30 **Poster Session 3**

21:00 **Conference official dinner**

Venue:

La Carbonera - Los Tinglados
Moll Oriental, 3, 08039 Barcelona



Friday, June 19

08:30 - 09:15 Steve Ashcroft Memorial Lecture

Chair: Guy A. Rutter, Université de Montréal, Canada

Early milestone and later developments in islet research
Peter R. Flatt, Ulster University, UK

09:15 - 11:15 Session 6

ISLET DYSFUNCTION BEYOND T1D AND T2D

Chairs:

Idem Akermann, University of Birmingham, UK

Miriam Cnop, Université Libre de Bruxelles, Center for Diabetes Research Brussels, Belgium

09:15 - 09:45 **Integrative single-cell approaches in diabetes**
Joan Camuñas, University of Gothenburg, Sweden

09:45 - 10:15 **Illuminating mechanisms underlying the pro-differentiation effects of select DYRK1A inhibitors in human beta cell regeneration**
Andrew F. Stewart, Icahn School of Medicine at Mount Sinai, Diabetes, Obesity and Metabolism Institute, New York, USA

10:15 - 10:45 **Beta-cell biology insights from gene discovery studies**
Elisa De Franco, University of Exeter Medical School, Institute of Biomedical and Clinical Science, Exeter, UK

10:45 - 11:00 **PO 63 - Multi-Omics of decremental β -cell mass and insulin receptor blockade reveals β -cell loss-specific systemic programs and BAT whitening**
Daniel Oropeza, University of Geneva, Switzerland

11:00 - 11:15 **PO 28 - Exploring stage-specific chromatin accessibility throughout early pancreatic development**
Katie Partridge, University of Exeter, UK

11:15 - 11:50 **COFFEE BREAK**



Friday, June 19

11:50 - 13:50 **Session 7**

ENDOCRINE-EXOCRINE CROSSTALK

Chairs:

Meritxell Rovira, Bellvitge Biomedical Research Institute,
L'Hospitalet de Llobregat, Spain

Anne Grapin-Botton, Max Planck Institute of Molecular Cell
Biology and Genetics, Dresden, Germany

11:50 - 12:20 **The endocrine–metabolic nexus in exocrine pancreatic cancer**

Núria Malats, Spanish National Cancer Research Centre, Genetic
& Molecular Epidemiology Group, Madrid, Spain

12:20 - 12:50 **The emerging role of pancreatic exocrine profibrotic signalling in the pathogenesis of type 3c diabetes**

James A. Shaw, Newcastle University, Translational and Clinical
Research Institute, UK

12:50 - 13:20 **A single-cell multi-omic atlas of the human pancreas across development, health, and type 2 diabetes**

Elisabetta Mereu, Josep Carreras Leukaemia Research Institute,
Barcelona, Spain

13:20 - 13:35 **PO 4 - Profibrotic and fatty acid signalling gene expression profiles underlying progressive pathology within the human CF pancreas**

Nicole Kattner, Newcastle University, UK

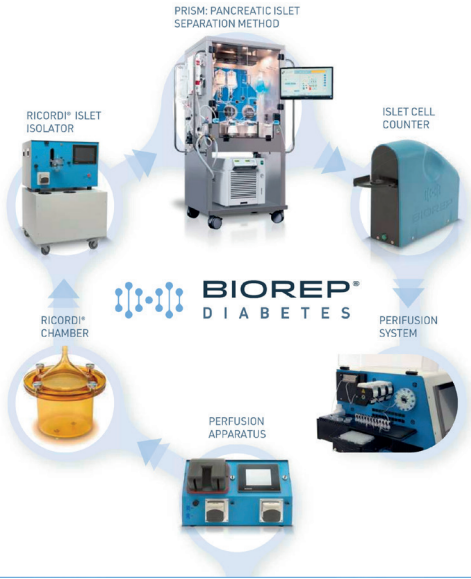
13:35 - 13:50 **PO 37 - Single cell multiome profiling of human healthy pancreas reveals novel ductal populations associated with pancreatic cancer prognosis and classification**

Joel Moro, Bellvitge Biomedical Research Institute - IDIBELL,
L'Hospitalet de Llobregat, Spain

13:50 - 14:00 **Closing remarks EISG 2026**

Lorenzo Pasquali, Universitat Pompeu Fabra, Barcelona, Spain
Meritxell Rovira, Bellvitge Biomedical Research Institute,
L'Hospitalet de Llobregat, Spain

AN INTEGRATED WORKFLOW FOR HUMAN ISLET ISOLATION



Biorep Diabetes is committed to developing breakthrough technologies that accelerate human islet isolation and advance cell-based therapies for Type 1 diabetes (T1D). Our integrated workflow connects perfusion, digestion, separation, and functional testing into a standardized platform that supports consistent, high-quality isolations across laboratories worldwide.

BIOMEDICAL INNOVATION



Breakthrough T1D® Clinical & Research Congress

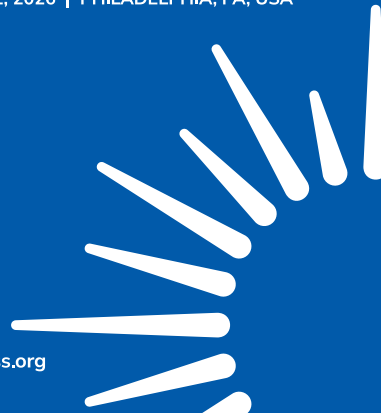
The Best Minds. The Boldest Ideas.
Shaping the Future of T1D.

OCTOBER 9-11, 2026 | PHILADELPHIA, PA, USA



In collaboration with
ATTO
Advanced Technologies
& Treatments for Diabetes

BT1DCongress.org





EUROPEAN
ISLET STUDY GROUP
 CONFERENCE 2026

SPONSORS

PLATINUM



GOLD



SILVER



BRONZE



Secretaría técnica



📍 Barcelona · Madrid

☎ 93 451 17 24

✉ info@tacticsmd.net

🌐 www.tacticsmd.net